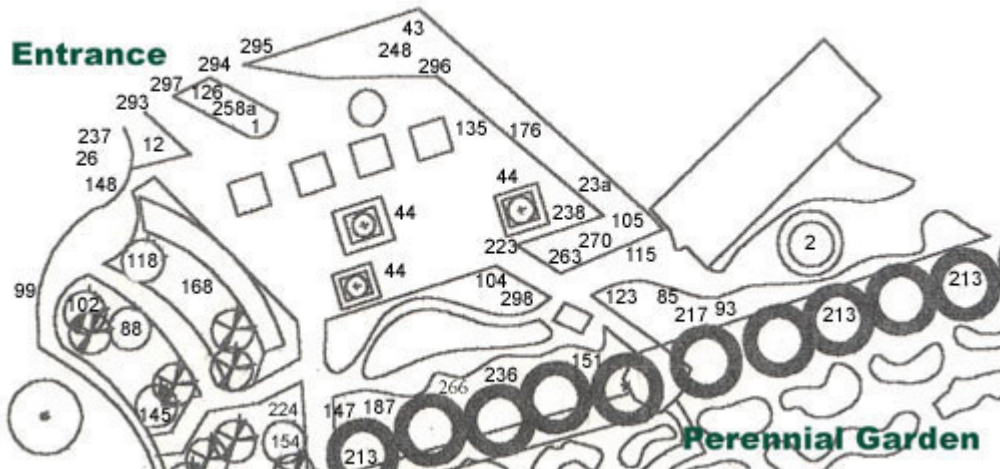


## Entrance Garden



### Plant List (updated fall 2002 all plants not included)

\*\*\* The numbers on this page do not correspond to any numbers in the garden! \*\*\*

1. *Acer griseum* - Paperbark Maple
2. *Acer palmatum* - Japanese Maple
12. *Aesculus pavia* - Red Buckeye
- 23a. *Chionanthus virginicus* - White Fringetree
26. *Cornus controversa* - Giant Dogwood
43. *Lagerstroemia indica* - Crapemyrtle
44. *Liquidambar styraciflua* 'Rotundiloba' - Fruitless Sweetgum
85. *Cedrus atlantica* 'Glauca' - Blue Atlas Cedar
88. *Cryptomeria japonica* - Japanese Cryptomeria
93. *Ilex x attenuata* 'Fosteri' - Foster's American Holly
99. *Ilex vomitoria* - Yaupon Holly
102. *Magnolia grandiflora* 'Little Gem' - Dwarf Southern Magnolia
104. *Picea abies* 'Nidiformis' - Bird's Nest Spruce
105. *Picea pungens* 'Fat Albert' - Semi-Dwarf Blue Spruce

115. *Thuja occidentalis* - American Arborvitae
118. *Tsuga canadensis* - Eastern Hemlock
123. *Berberis thunbergii* - Japanese Barberry
126. *Buddleia davidii* - Butterfly Bush
135. *Corylopsis spicata* - Spike Winterhazel
145. *Hibiscus syriacus* - Variegated Rose-of-Sharon
147. *Hydrangea quercifolia* - Oakleaf Hydrangea
148. *Ilex verticillata* - Winterberry Holly
151. *Jasminum nudiflorum* - Winter Jasmine
154. *Ligustrum sinense* 'Variegatum' - Variegated Chinese Privet
176. *Viburnum carlesii* - Koreanspice Viburnum
181. *Vitex negundo* - Chastetree
187. *Aucuba japonica* - Japanese Aucuba
213. *Ilex* x 'Nellie R. Stevens' - Nellie R. Stevens Holly
217. *Juniperus scopulorum* 'Wichita Blue' - Wichita Blue Juniper
223. *Juniperus virginiana* 'Grey Owl' - Grey Owl Juniper
224. *Juniperus squamata* 'Blue Star' - Blue Star Juniper
236. *Mahonia bealei* - Leatherleaf Mahonia
237. *Myrica cerifera* - Southern Waxmyrtle
238. *Nandina domestica* - Heavenly Bamboo
248. *Prunus laurocerasus* - Cherrylaurel
- 258a. *Viburnum davidii* - David Viburnum
263. *Hypericum frondosum* - Golden St. Johnswort

266. *Cephalotaxus harringtonia* – Cow-tail Pine
270. *Loropetalum chinense* - Chinese Fringe-flower
293. *Clematis armandii* - Leatherleaf Clematis
294. *Akebia quinata* - Fiveleaf Akebia
295. *Ampelopsis brevipedunculata* - Porcelain Vine
296. *Caryopteris x clandonensis* - Blue-mist Spirea
297. *Bignonia capreolata* - Crossvine