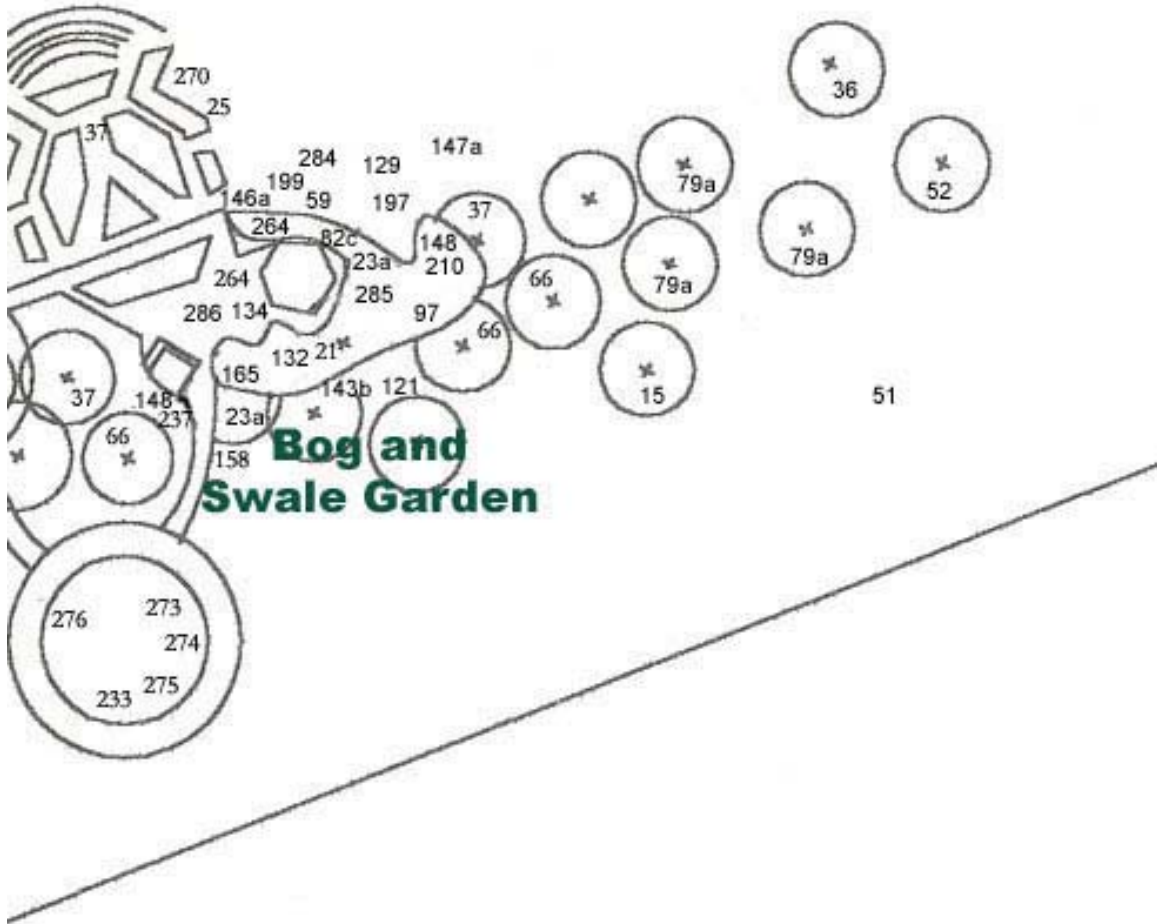


Bog and Swale Garden



Plant List (updated Summer 2002)

- 15. *Betula nigra* - River Birch
- 21. *Cercis canadensis* - Redbud
- 23a. *Chionanthus virginicus* - White Fringetree
- 25. *Cornus florida* - Flowering Dogwood
- 36. *Ginkgo biloba* - Maidenhair Tree
- 37. *Gleditsia triacanthos inermis* - Thornless Honeylocust

51. *Morus alba* - White Mulberry
52. *Nyssa sylvatica* - Black Gum
59. *Prunus persica* - Patio Peach
66. *Quercus palustris* - Pin Oak
- 79a. *Taxodium distichum* - Bald Cypress
- 82c. *Halesia tetraptera* - Carolina Silverbell
97. *Ilex opaca* - American Holly
121. *Aesculus parviflora* - Bottlebrush Buckeye
129. *Calycanthus floridus* - Sweetshrub
132. *Clethra alnifolia* - Sweet Pepperbush
- 143b. *Fothergilla gardenii* - Dwarf Fothergilla
- 146a. *Hydrangea macrophylla* - Bigleaf Hydrangea
- 147a. *Hydrangea paniculata* 'Tardiva' - Tardiva Panicked Hydrangea
148. *Ilex verticillata* - Winterberry Holly
158. *Cephalanthus occidentalis* - Buttonbush
165. *Illicium henryi* - Henry Anise-tree
197. *Danae racemosa* - Alexandrian Laurel
199. *Euonymus japonicus* 'Latifolius Albomarginatus' - Japanese Euonymus
210. *Ilex glabra* - Inkberry
233. *Liriope spicata* - Lilyturf
237. *Myrica cerifera* - Southern Wax Myrtle
264. *Lonicera nitida* - Boxleaf Honeysuckle
270. *Loropetalum chinense* - Chinese Fringe-flower

273. *Hypericum calycinum* - Aaronsbeard St. Johnswort

274. *Rubus calycinoides* - Creeping Raspberry

275. *Iberis sempervirens* - Candytuft

276. *Arctostaphylos uva-ursi* - Bearberry

284. *Amelanchier arborea* - Downy Serviceberry

285. *Rhus typhina* 'Lacinata' - Cut-leaf Staghorn Sumac

286. *Epimedium* sp. - Epimedium